

TIN CITY

EXTERNAL CORRUGATED SHEETING :
(CREAM)

WINDOW & DOOR FRAMES:
(SILVER)

STEEL ROOF SHEETING
(GREEN DARK)

COLUMNS:
(CREAM)

GYM

EXTERNAL CORRUGATED SHEETING
(SILVER LIGHT)

WINDOW & DOOR FRAMES:
(SILVER)

STEEL ROOF SHEETING
(GREY)

COLUMNS:
DUNE - COLORBOND

BLOCKS 1-6

EXTERNAL WALL PAINT
(ON FACE BRICK):
MEDLAR HALF - DULUX - Code: A225

BALUSTRADE AND COLUMNS:
MONUMENT - COLORBOND

BALUSTRADE AND COLUMNS:
MONUMENT - COLORBOND

LEGEND

EXISTING BUILDINGS

CONCRETE PATHS

PROPOSED MULCHED AREAS

PROPOSED NATIVE
GRASS/TURFED AREAS

EXISTING VEGETATION

PROPOSED TREE
3-10M HIGH
'SNAPPY GUM'
'EUCALYPTUS BREVIFOLIA'

PROPOSED SHRUB
350MM
DIANELLA 'TASMANICA' VARIGATA

PROPOSED SMALL TREE
6M TALL
'GREVILLEA HONEY GEM'

A

- A - RENDER A
THE ESPLANADE STREET VIEW FROM TIN CITY
6 ACCOMMODATION BLOCKS REMOVED
- B - RENDER B
THE ESPLANADE STREET VIEW TOWARDS
PENINSULA PALMS CENTRAL FACILITIES
- C - RENDER C
THE ESPLANADE STREET VIEW TOWARDS
GYM & MAIN ENTRY
- D - RENDER D
PENINSULA PALMS CENTRAL FACILITIES ENTRY UPGRADE

CAUTION
PROJECT DRAWING ONLY

CENTRAL FACILITIES

RIBBED CONCRETE BLOCKWORK
(BIEGE-BROWN)

WINDOW & DOOR FRAMES:
SILVER

STEEL ROOF SHEETING & FASCIA
(CREAM)

EXTERNAL WALL PAINT (COLUMNS):
BIRCH GREY - UC0741

SITE PLAN
1 : 750

MOTELS

EXTERNAL WALL PAINT
(ON FACE BRICK):
MEDLAR HALF - DULUX - A225

WINDOW & DOOR FRAMES:
MONUMENT - COLORBOND

ROOF SHEETING:
EVENING HAZE - COLORBOND

BALUSTRADE AND COLUMNS:
MONUMENT - COLORBOND

NOT FOR CONSTRUCTION
PRELIMINARY

RioTinto

DAMPIER
PENINSULA PALMS REFURBISHMENT
PENINSULA PALMS
LANDSCAPING PLAN

HAMERSLEY IRON PTY LTD
HAMERSLEY HMS PTY LTD
ROBE RIVER MINING COMPANY PTY LTD

INFORMATION AND REPRESENTATION ON THIS
DRAWING ARE THE INTELLECTUAL PROPERTY
OF THE RIO TINTO GROUP UNLESS
SPECIFICALLY IDENTIFIED OTHERWISE. ALL
RIGHTS INCLUDING USE RESERVED.

THIRD ANGLE
PROJECTION

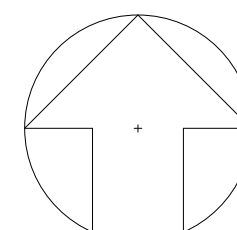
SCALE As indicated
DRAWING NUMBER
SK1.01

PROJECT NUMBER -

REV
B

REV	BY	DATE	DESCRIPTION	CKD	APP
A	NM	29/05/18	ISSUED FOR INFORMATION		
B	NM	25/06/2018	ISSUED FOR INFORMATION		

REV	BY	DATE	DESCRIPTION	CKD	APP



DRAWN	NMCDONALD
TRACED	
CHECKED	
SUPT DRAFT	
PROJ. ENG.	
APPROVED	
APP. FOR CONST.	



1

REV
B

CL. FIRST
5420
TOP OF WALL
5385
FFL. FIRST
2845
CL. GROUND
2600
FFL. GROUND
0

PROPOSED TYPICAL ACCOMM. BLOCK 5&6 - ELEVATION 1
1 : 100

EXISTING EXTERNAL WALLS TO REMAIN
EXISTING STEEL BALUSTRADE, COLUMNS
AND BALCONY SLAB TO REMAIN

VERTICAL POWDERCOATED ALUMINIUM
BATTEN SCREENING TO STAIRS
(TYPICAL)

EXISTING ROOF SHEETING TO REMAIN

CORTEN SCREENING
(TYPICAL)

NEW ENTRY DOORS IN
EXISTING DOOR FRAMES

EXISTING STEEL STAIRS WITH
HANDRAILS TO REMAIN

LINE OF EXISTING RETAINING WALL
TO REMAIN SHOWN DASHED

CL. FIRST
5420
TOP OF WALL
5385
FFL. FIRST
2845
CL. GROUND
2600
FFL. GROUND
0

PROPOSED TYPICAL ACCOMM. BLOCK 5&6 - ELEVATION 3
1 : 100

EXISTING STEEL BALUSTRADE, COLUMNS
AND BALCONY SLAB TO REMAIN

VERTICAL POWDERCOATED ALUMINIUM
BATTEN SCREENING TO STAIRS
(TYPICAL)

EXISTING ROOF SHEETING TO REMAIN

CORTEN SCREENING
(TYPICAL)

NEW ENTRY DOORS IN
EXISTING DOOR FRAMES

EXISTING STEEL STAIRS WITH
HANDRAILS TO REMAIN

CL. FIRST
5420
TOP OF WALL
5385
FFL. FIRST
2845
CL. GROUND
2600
FFL. GROUND
0

PROPOSED TYPICAL ACCOMM. BLOCK 5&6 - ELEVATION 2
1 : 100

EXISTING ROOF SHEETING TO REMAIN

EXISTING STEEL BALUSTRADE,
COLUMNS AND BALCONY SLAB
TO REMAIN

EXISTING RETAINING WALL
TO REMAIN

EXISTING STEEL STAIRS WITH
HANDRAILS TO REMAIN

BLOCK 5 AND 6 EARTH TONES

EXTERNAL WALL PAINT (ON FACE BRICK):
DULUX: Dieskau GR12

ROOF SHEETING:
COLORBOND: Dune C8

SCREENING:
CORTEN STEEL

VERTICAL BATTENS:
DULUX: Tangier A80

DOOR PANEL:
DULUX: Attitude A71

BALUSTRADE, COLUMNS AND FRAME:
COLORBOND: Monument Matte C29

NOT FOR CONSTRUCTION
PRELIMINARY

DRAWN
JP
09.07.18
TRACED
PS
09.07.18
CHECKED
SUPT DRAFT
PROJ. ENG.
APPROVED
APP. FOR CONST.

RioTinto

HAMERSLEY IRON PTY LTD
HAMERSLEY HMS PTY LTD
ROBE RIVER MINING COMPANY PTY LTD

DAMPIER
PENINSULA PALMS REFURBISHMENT
PENINSULA PALMS
COLOUR SCHEME ELEVATIONS

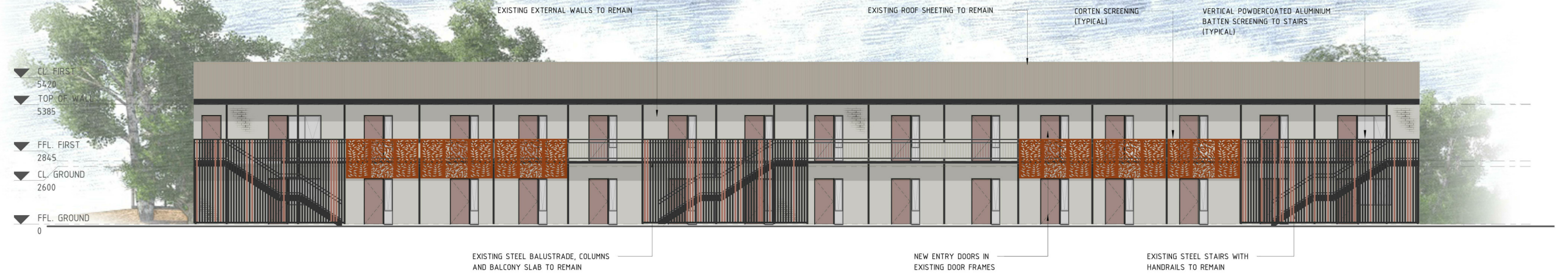
INFORMATION AND REPRESENTATION ON THIS
DRAWING ARE THE INTELLECTUAL PROPERTY
OF THE RIO TINTO GROUP UNLESS
SPECIFICALLY IDENTIFIED OTHERWISE. ALL
RIGHTS INCLUDING USE RESERVED.

THIRD ANGLE
PROJECTION

SCALE 1 : 1
DRAWING NUMBER
SK1.06

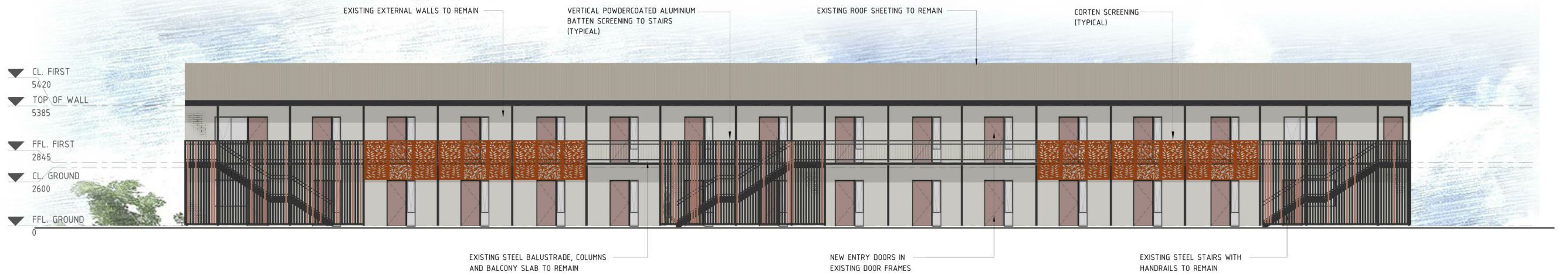
REV
B

PROJECT NUMBER -



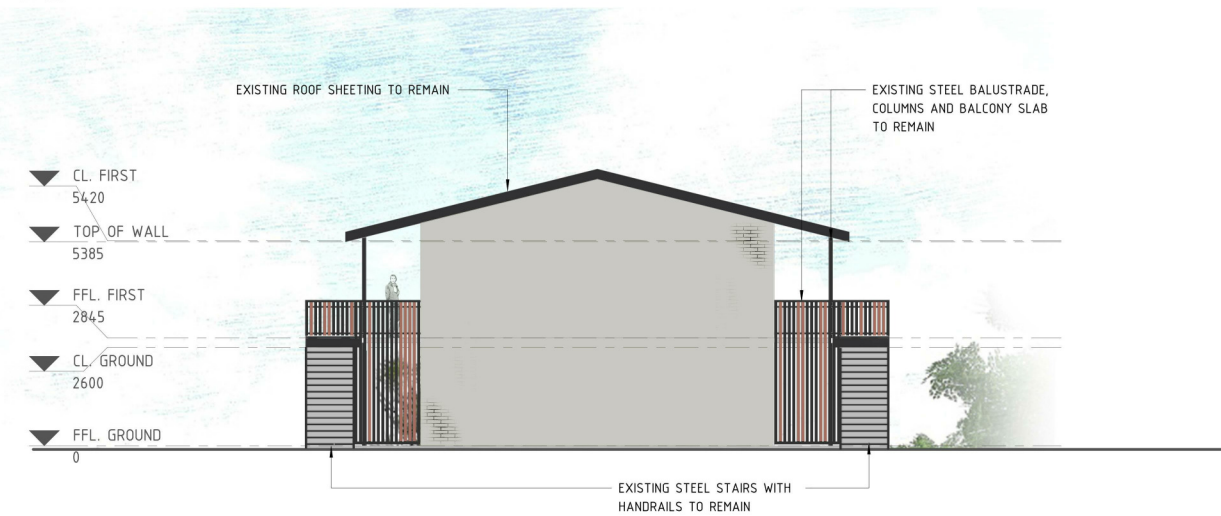
PROPOSED TYPICAL ACCOMM. BLOCK 5&6 - ELEVATION 1

1 : 100



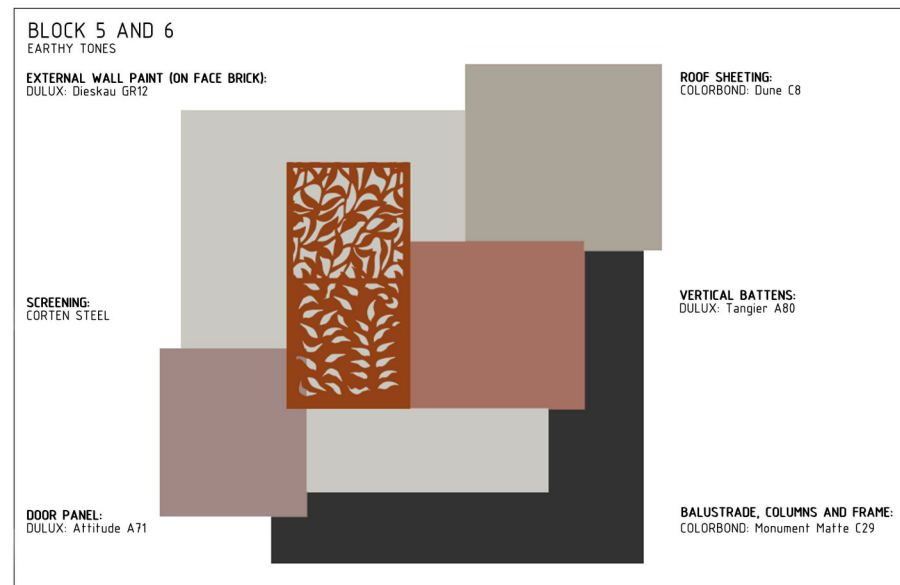
PROPOSED TYPICAL ACCOMM. BLOCK 5&6 - ELEVATION 3

1 : 100



PROPOSED TYPICAL ACCOMM. BLOCK 5&6 - ELEVATION 2

1 : 100



NOT FOR CONSTRUCTION
PRELIMINARY

SHEET SIZE A1 REFERENCES	REV		BY	DATE	DESCRIPTION		CKD	APP	REV		BY	DATE	DESCRIPTION		CKD	APP	DRAWN		JP	09.07.18	DRAWING NUMBER		SK1.07	PROJECT NUMBER		-	THIRD ANGLE PROJECTION	
	A		NM	29.05.18	ISSUED FOR INFORMATION												DRAWN		JP	09.07.18	HAMERSLEY IRON PTY LTD		HAMERSLEY HMS PTY LTD		ROBE RIVER MINING COMPANY PTY LTD		DAMPIER PENINSULA PALMS REFURBISHMENT PENINSULA PALMS COLOUR SCHEME ELEVATIONS	
	B		NM	25.06.18	ISSUED FOR INFORMATION												TRACED											
																	CHECKED		PS	09.07.18								
																	SUIT DRAFT											
																	PROJ. ENG.											
																APPROVED												
																APP. FOR CONST.												



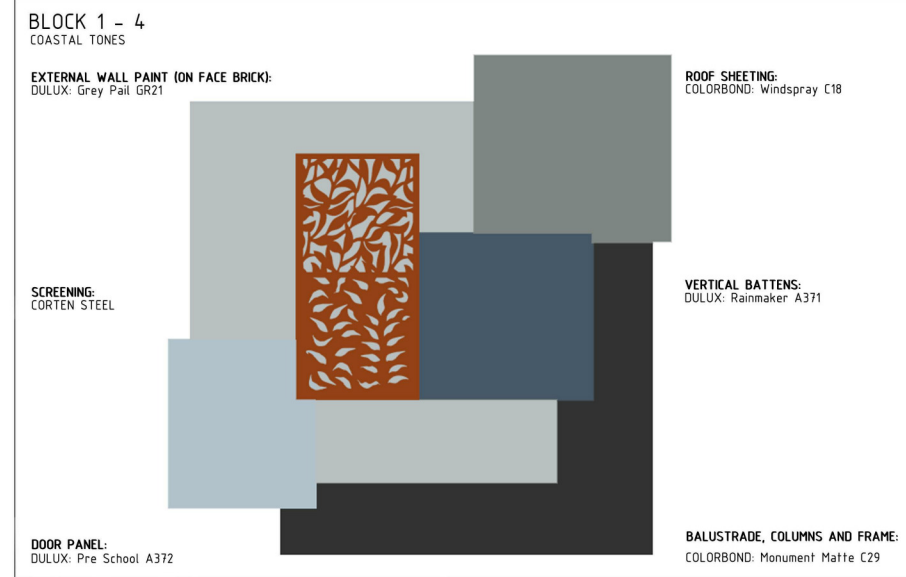
PROPOSED TYPICAL ACCOMM. BLOCK 1, 2, 3 & 4 - ELEVATION 1
1 : 100



PROPOSED TYPICAL ACCOMM. BLOCK 1, 2, 3 & 4 - ELEVATION 3
1 : 100



PROPOSED TYPICAL ACCOMM. BLOCK 1, 2, 3 & 4 - ELEVATION 2
1 : 100



NOT FOR CONSTRUCTION
PRELIMINARY

RioTinto

DAMPIER
PENINSULA PALMS REFURBISHMENT
PENINSULA PALMS
COLOUR SCHEME ELEVATIONS

HAMERSLEY IRON PTY LTD
HAMERSLEY HMS PTY LTD
ROBE RIVER MINING COMPANY PTY LTD

INFORMATION AND REPRESENTATION ON THIS
DRAWING ARE THE INTELLECTUAL PROPERTY
OF THE RIO TINTO GROUP UNLESS
SPECIFICALLY IDENTIFIED OTHERWISE. ALL
RIGHTS INCLUDING USE RESERVED.

THIRD ANGLE
PROJECTION

SCALE 1 : 1
DRAWING NUMBER
SK1.08
PROJECT NUMBER -

REV
B

SHEET SIZE A1 REFERENCES		REV		BY	DATE	DESCRIPTION	CKD	APP
		A		NM	29.05.18	ISSUED FOR INFORMATION		
		B		NM	25.06.18	ISSUED FOR INFORMATION		

REV		BY	DATE	DESCRIPTION	CKD	APP

DRAWN	JP	09.07.18
TRACED		
CHECKED	PS	09.07.18
SUPT DRAFT		
PROJ. ENG.		
APPROVED		
APP. FOR CONST.		